

User Manual



ScanGo

Find your own path!

1

Content

1. About ScanGo
2. Product overview
3. Instructions
4. Safety Information
5. Troubleshooting
6. FAQ
7. Warranty details
8. Contacts

"Find your own path"

2

About ScanGo

ScanGo is designed to orchestrate the crowd during large outdoors and indoors events. It combines a scanner, the physical structure to be placed in the event area, with a mobile application.

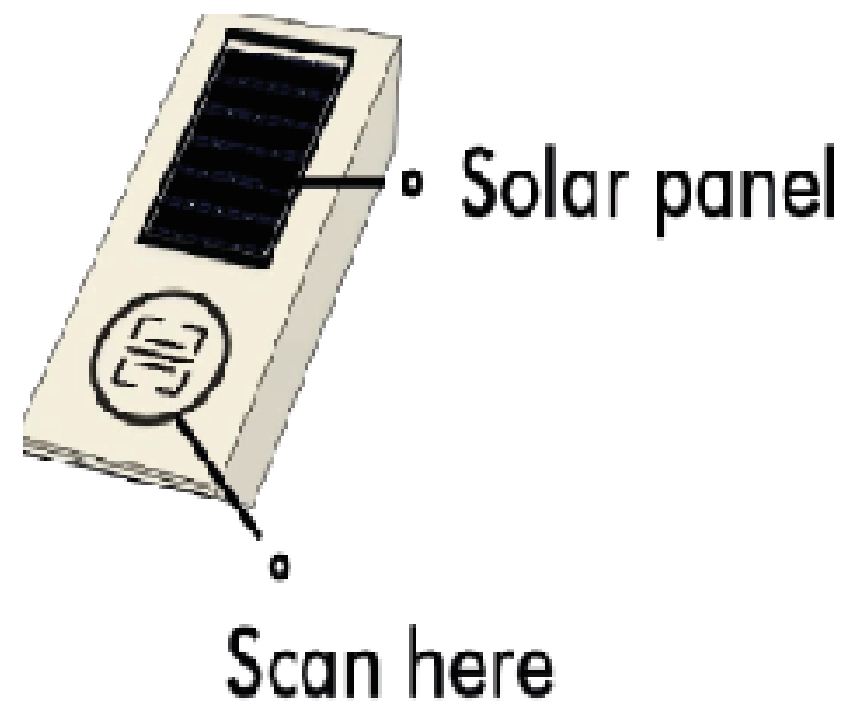
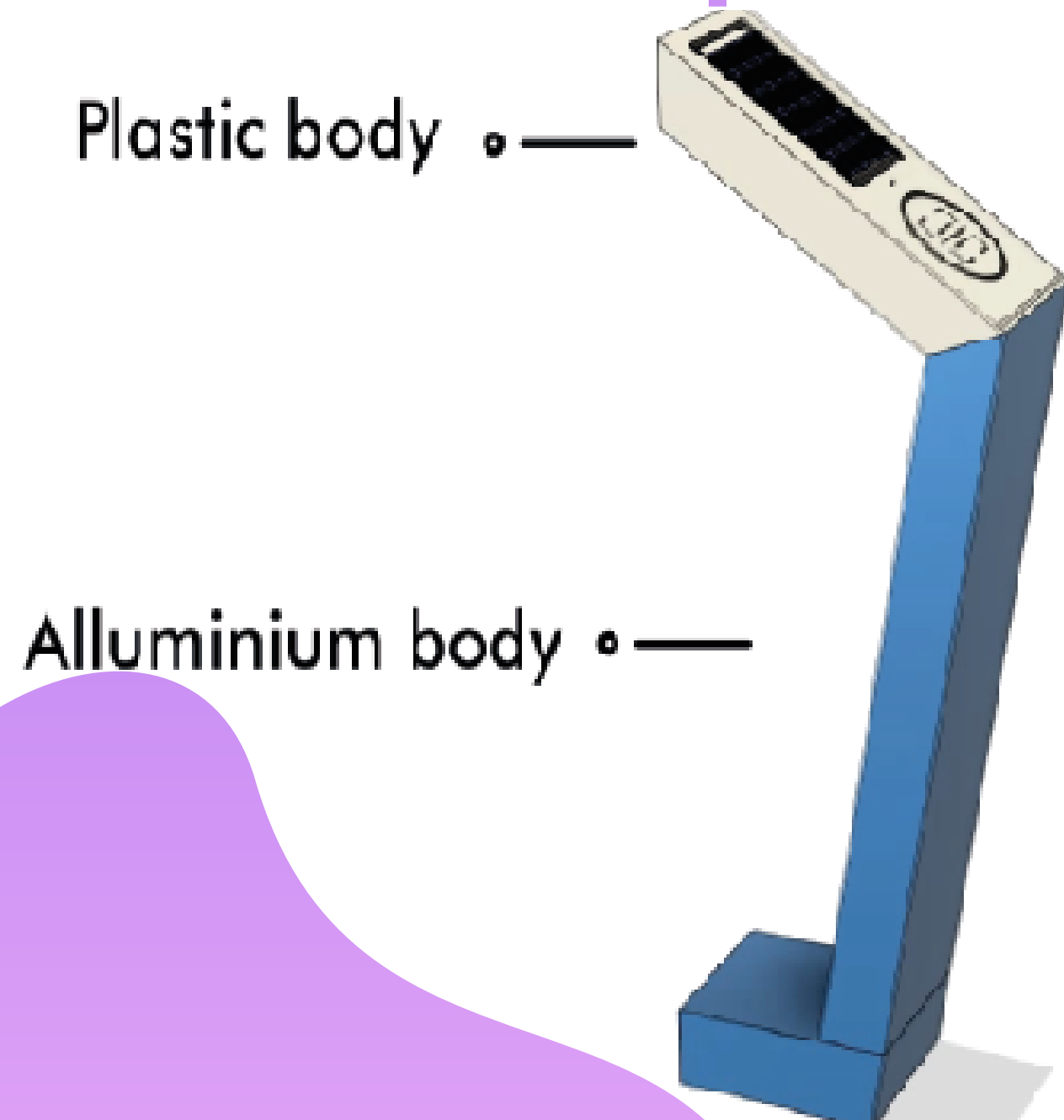
The incorporated NFC module enables scanning with a smartphone once the ScanGo application is installed.

The application gives information about the amount of people in the event in real-time, and provides possible paths for the festival goers to follow, according to the activities he/she wishes to attend.

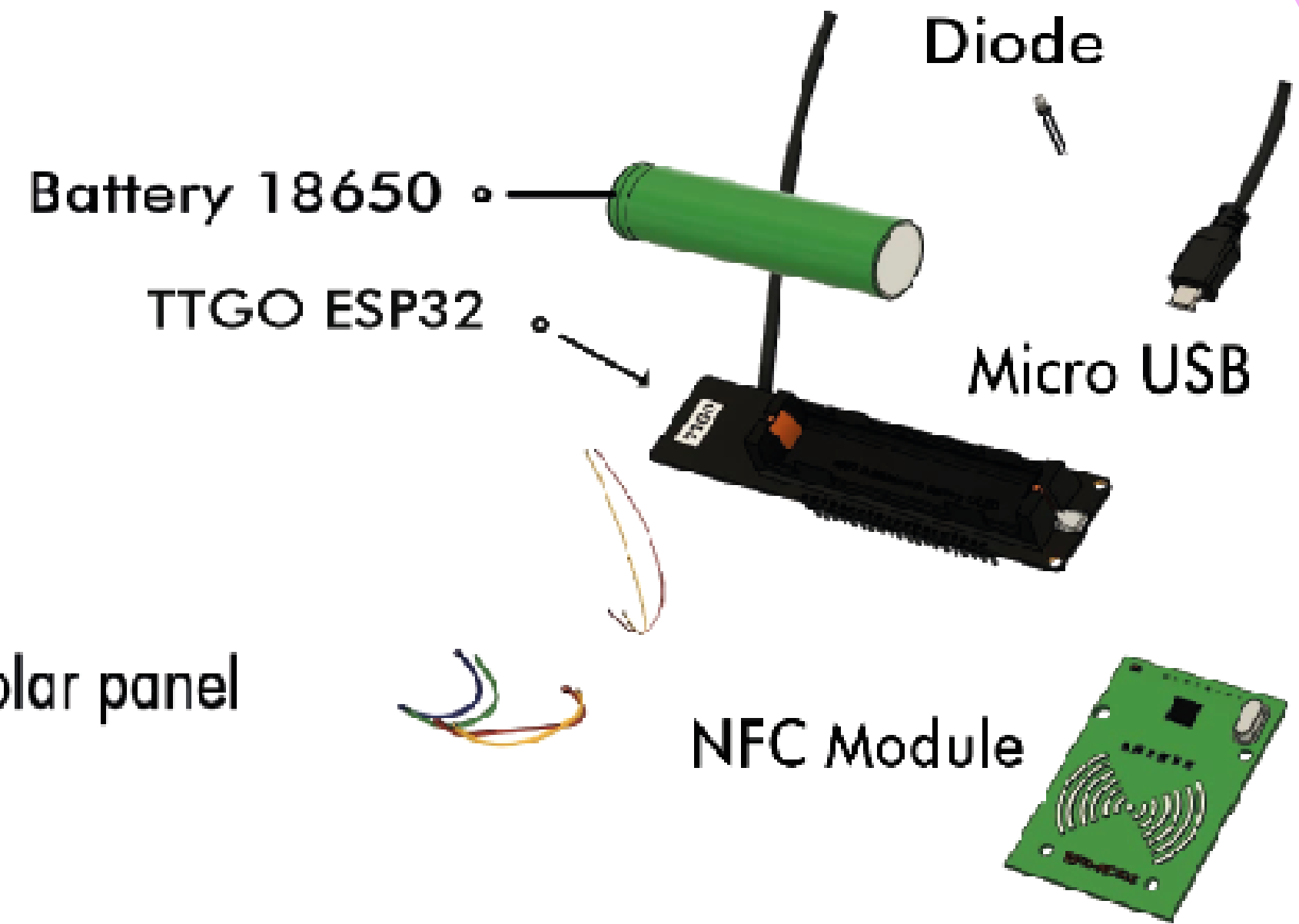
ScanGo aims at improving the festival goers experience on the go.

Product overview

External aspect



Internal components



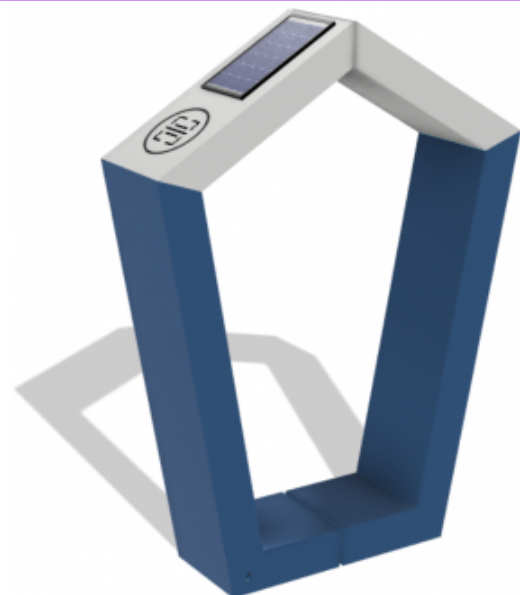
5

Instructions

6

Scanner

1. Charge the scanner equipment; red light means charging is required, green light means charging is complete.
2. To charge the scanner:
 - Once outdoors, the solar panel is used
 - If the equipment is indoors, use the inbuilt USB entry.



Application

1. Install the application on your phone.
2. Place your phone near the scanner twice.
3. Be redirected to the application.
4. Pick your activity and follow the suggested path.
5. Check the number of people in the event.
6. Enjoy your festival !!



7 Safety information

1. On rainy days: remove scanners from the enclosure to avoid damaged.
2. Do not let children or animals touch the device.
3. No direct contact between liquids and product's battery.
4. Do not cause physical damage to the product.
5. Do not expose scanners to temperatures outside the range of 0 to 35 °C.

8 Troubleshooting

Verify the connection of the micro USB cable between the solar panel and the ESP32 microcontroller.

Check if the cable has been connected properly and give it a few seconds to be detected.

- Is the ScanGo application compatible with my phone?

The application is compatible with every IOS and Android phone.

- Where do I download it?

It is available on App Store and Play Store.

- How can I be sure the scanning was done?

Scanning is done when the diode led is on.

- Does rain affect the scanning?

Rain does not affect the scanning process. Our scanners have an inclination angle of 30°, so the water flows straight to the ground.

- If the app shows a crowded area, is it forbidden to go there?

ScanGo application only provides suggested paths, it does not interfere in the participants' choices .You can enter the area at your own risk. It is not recommended

11

Warranty details

1. This product has a 5 year warranty from purchase.
2. The appliance has been manufactured with care and meticulously examined before delivery.
3. In the event of a warranty claim, please make contact by telephone with our service department or contact us on our website.
4. In the event of misuse and improper handling, using force and modifications not carried out by our authorized service brand, the warranty will become void.
5. Your statutory rights are not restricted in any way by this warranty.
6. If our device has a defect at the time of purchase and first use, this must be reported immediately.

12

Contacts



(+351) 000 002 000



scango@team1.mail



www.scango.com



ScanGo

Find your own path!

Now enjoy your
festival!